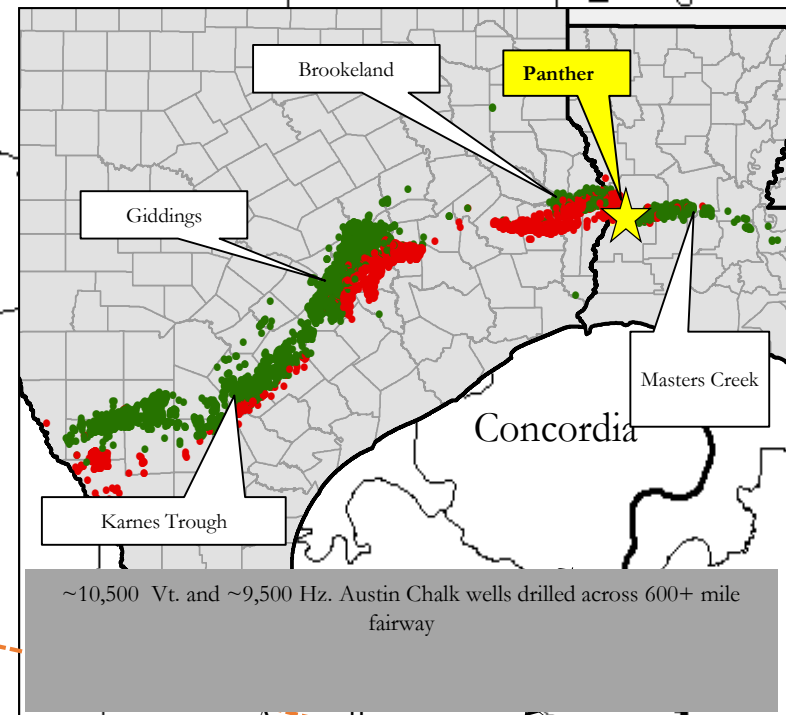
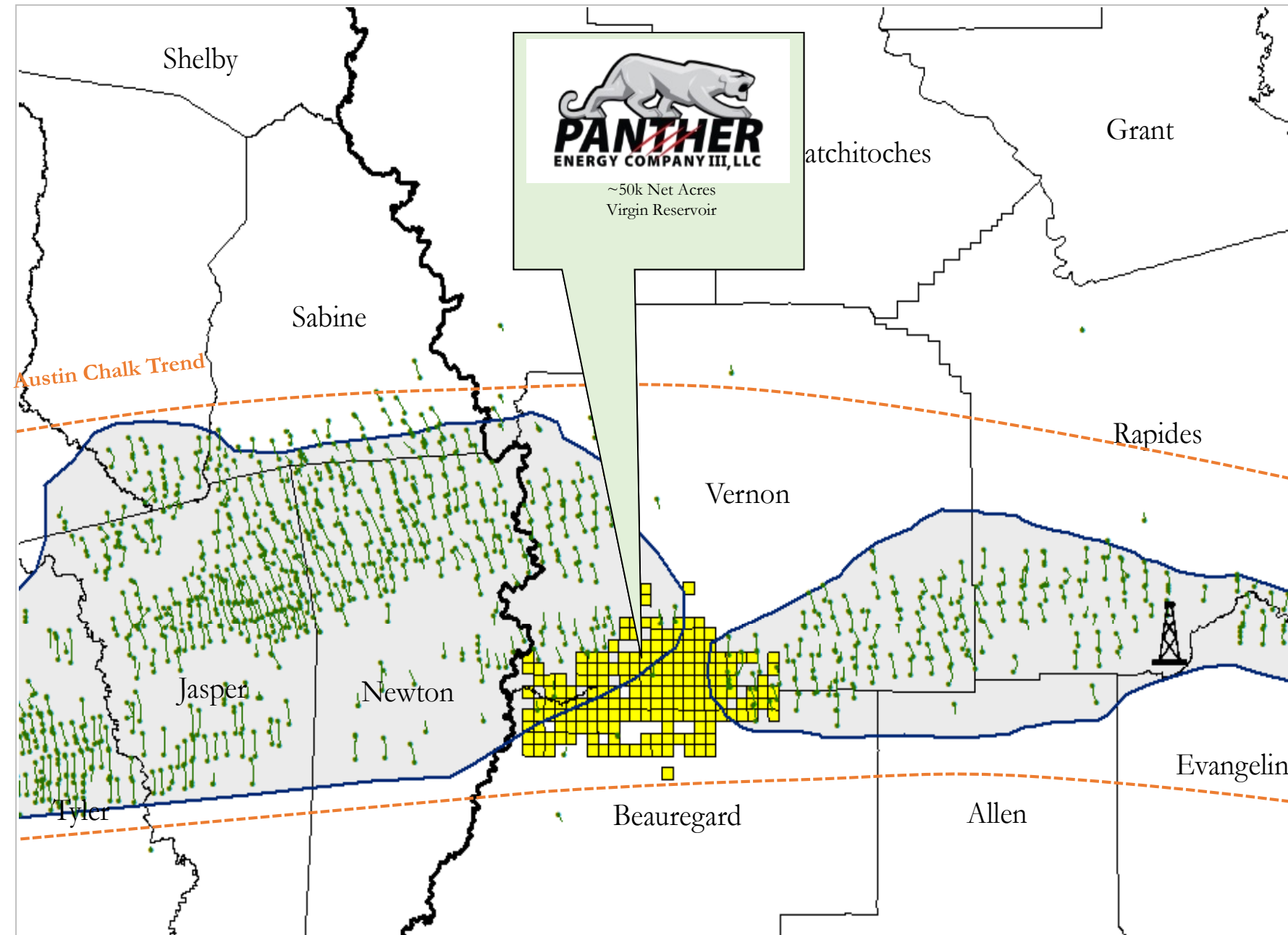


Western Louisiana Austin Chalk Trend



- **Highly contiguous position with concentration that supports operatorship across a significant portion of the position**
 - 56,593 gross acres | 49,868 net acres
 - 69% of net acreage concentrated in 32 operated⁽¹⁾ DSUs (~58% average WI)
 - Drill-ready for extended 1.5 and 2-mile laterals
- **No near-term expirations**
 - 2+ years remaining in primary term until 2021
 - Additional 2 year extensions remain as-needed for 99% of leases, extending term to 2023